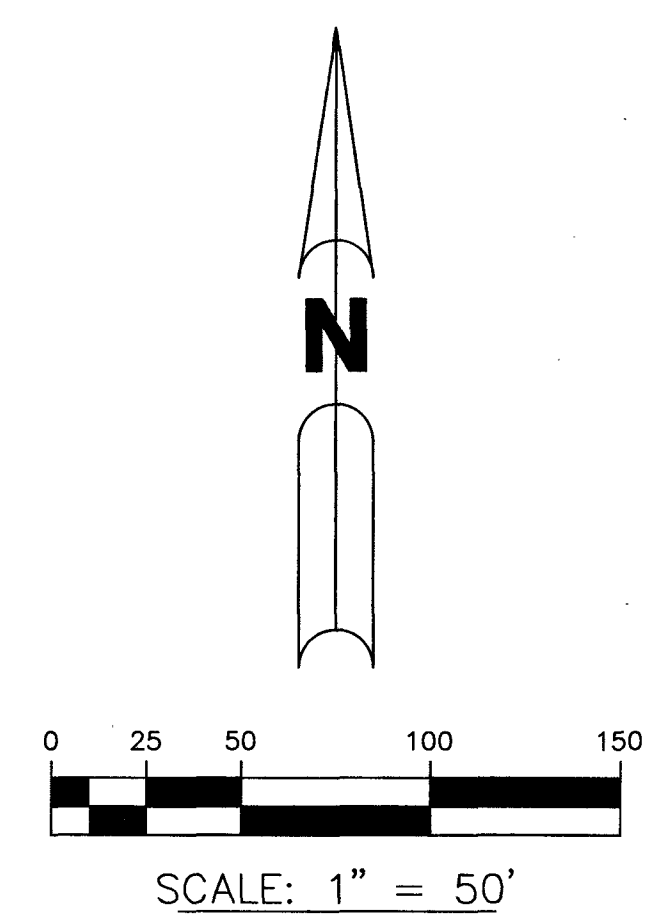
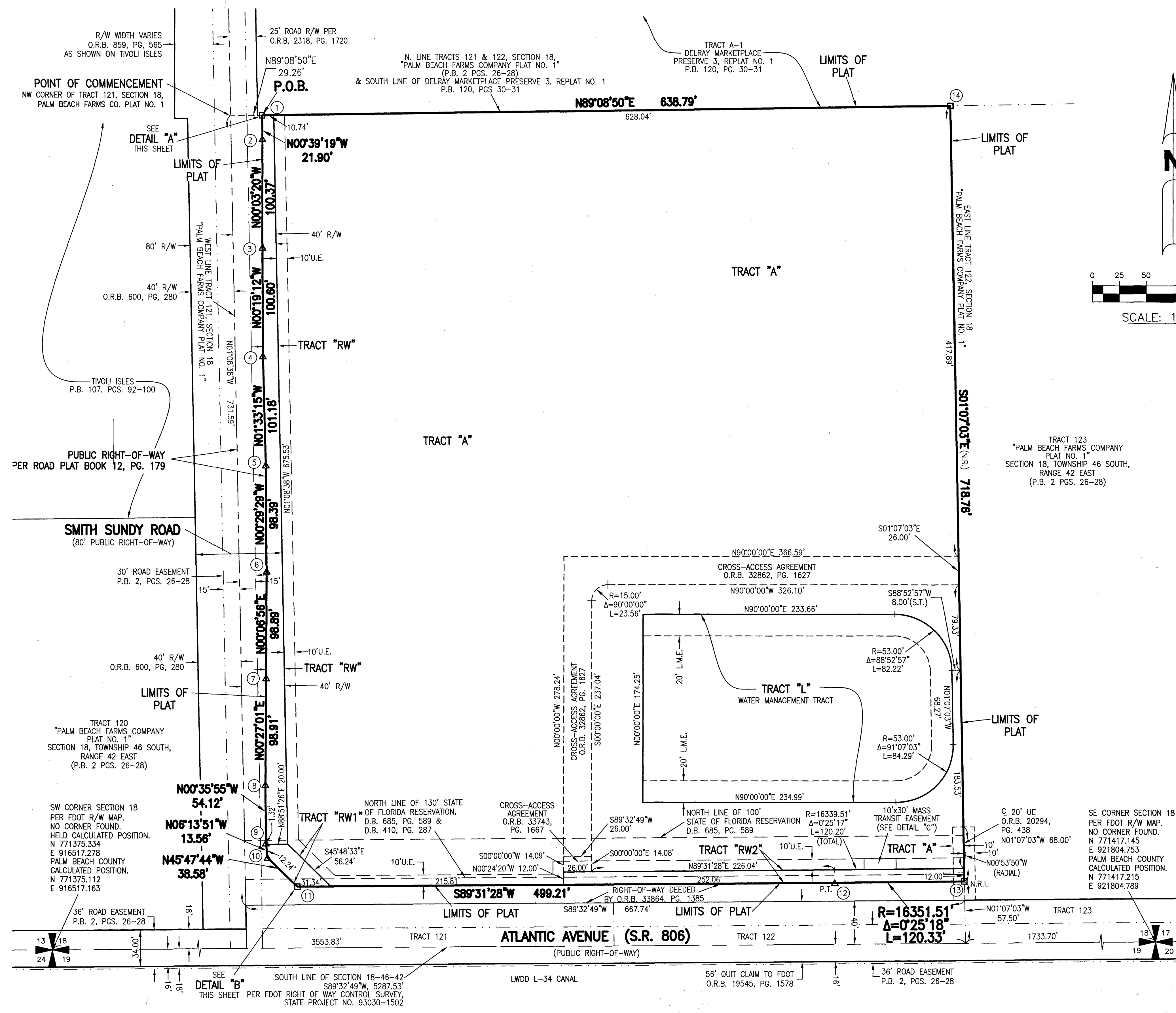
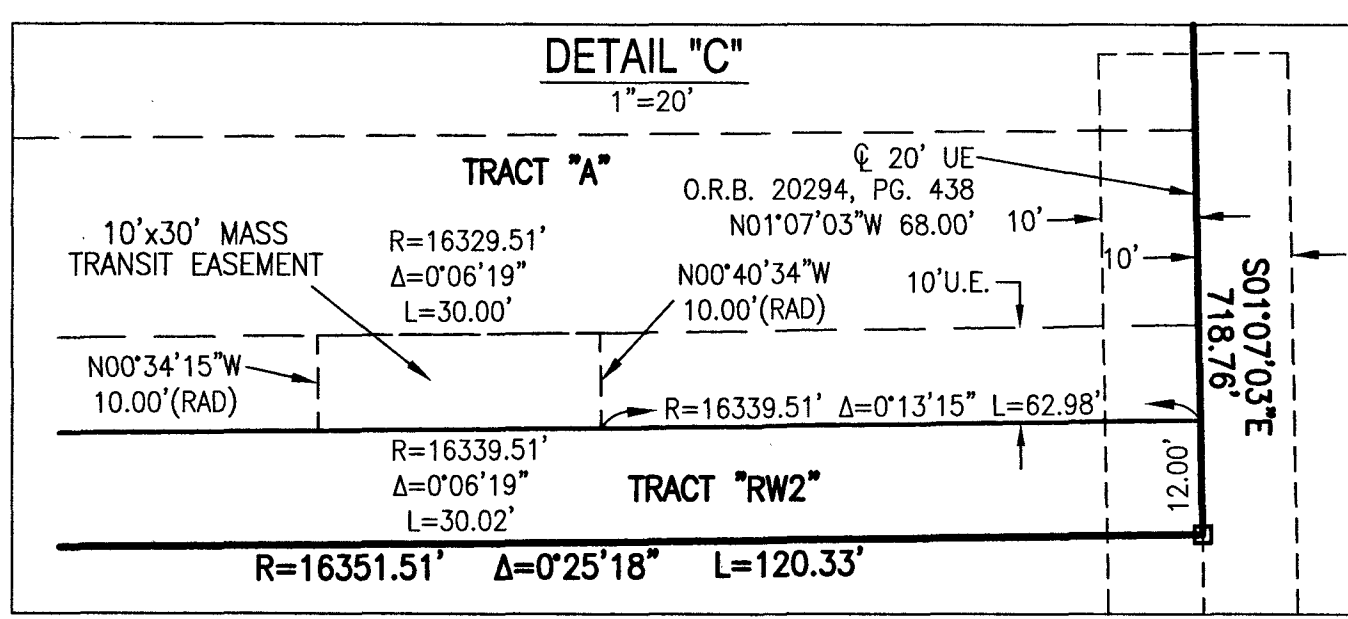


LEGENT DELRAY BEACH MUPD

BEING A REPLAT OF A PORTION OF TRACTS 121 AND 122, PALM BEACH FARMS CO. PLAT NO. 1, AS RECORDED IN PLAT BOOK 2, PAGE 26, PUBLIC RECORDS OF PALM BEACH COUNTY, FLORIDA, LYING WITHIN SECTION 18, TOWNSHIP 46 SOUTH, RANGE 42 EAST.

SHEET 2 OF 2

THIS INSTRUMENT WAS PREPARED BY
PERRY C. WHITE, P.S.M. 4213, STATE OF FLORIDA
SAND & HILLS SURVEYING, INC.
8461 LAKE WORTH ROAD, SUITE 410
LAKE WORTH, FLORIDA 33467
LB-7741

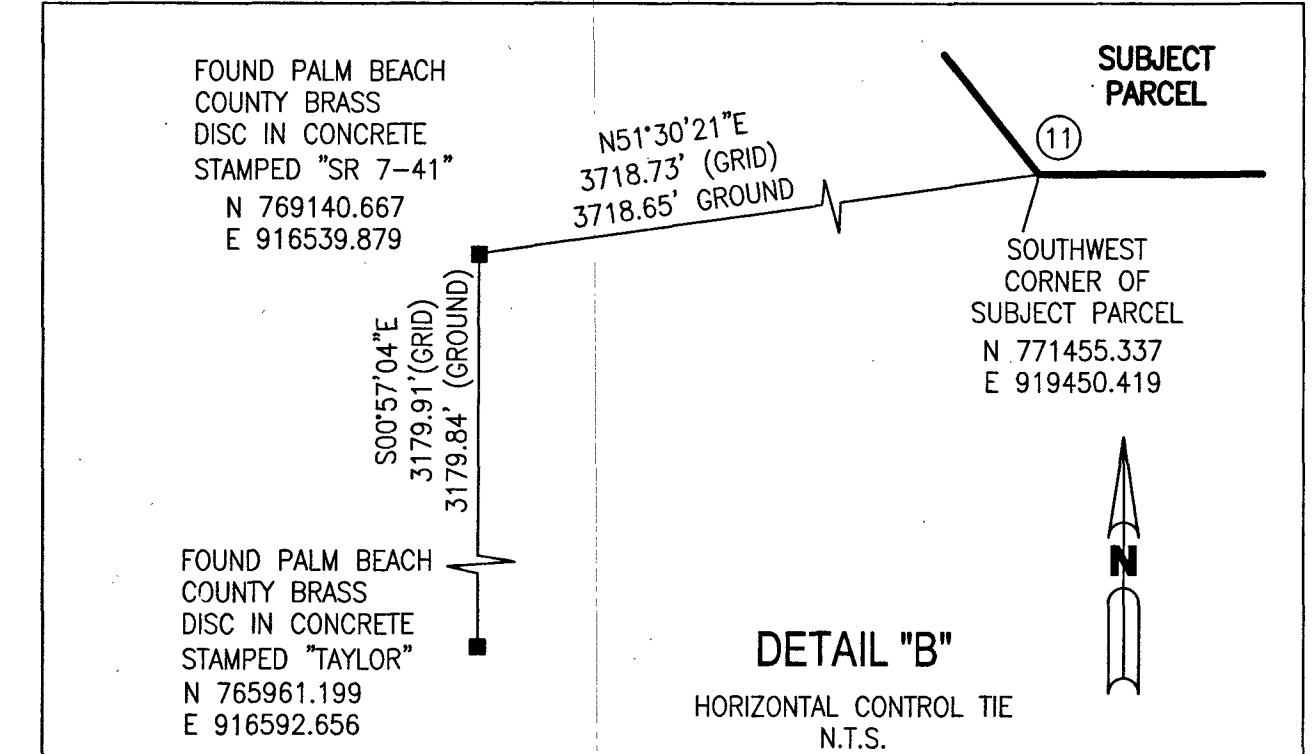
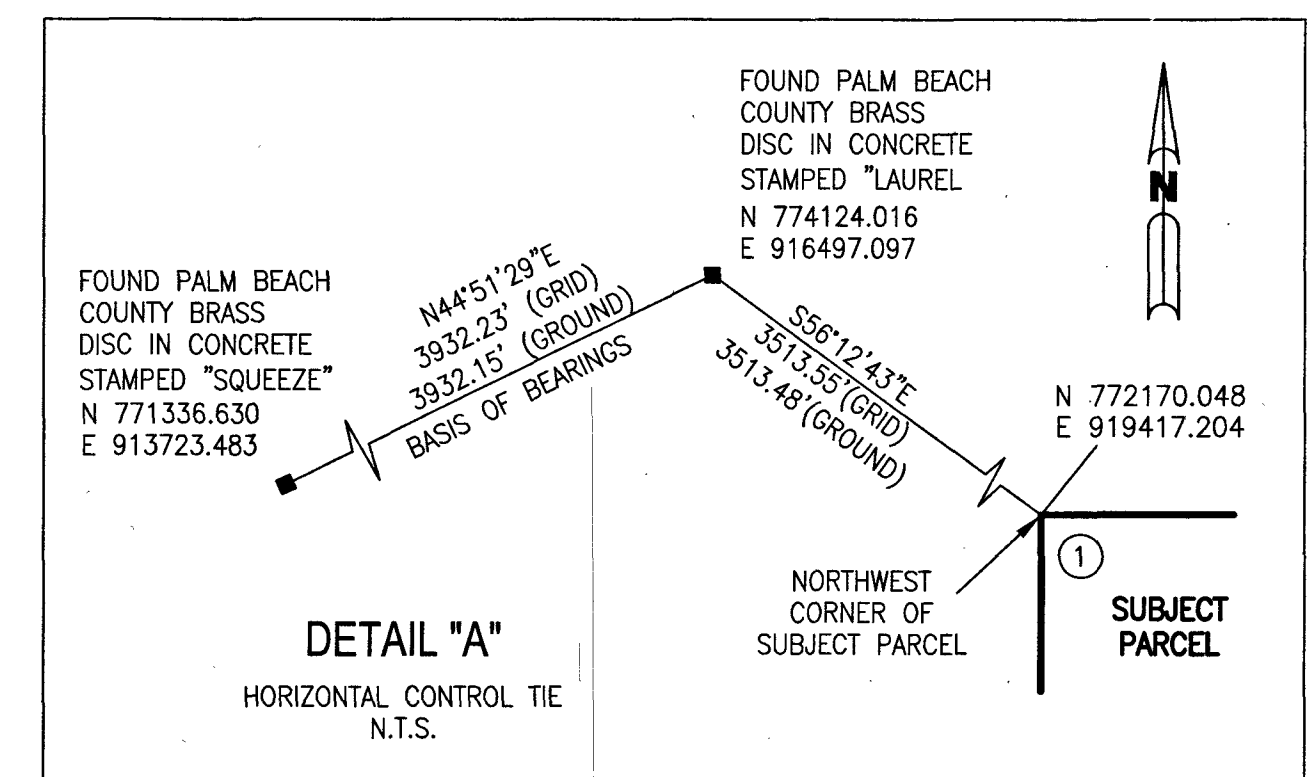


LEGEND:

- SET PERMANENT REFERENCE MONUMENT (PRM)
- 4"x4" CONCRETE MONUMENT WITH 1.5" DISK STAMPED L.B. #7741
- SET PERMANENT REFERENCE MONUMENT (PRM)
- △ 5/8" IRON ROD 1.5" IN LENGTH
- 1.4" CAP STAMPED PRM L.B. #7741
- BLK - BLOCK
- CB - CHORD BEARING
- CH - CHORD DISTANCE
- CL - CENTERLINE
- D.B. - DEED BOOK
- FDOT - FLORIDA DEPARTMENT OF TRANSPORTATION
- L - ARC LENGTH
- L.M.E. - LAKE MAINTENANCE EASEMENT
- N.R. - NOT RADIAL
- N.R.I. - NON-RADIAL INTERSECTION
- N.T.S. - NOT TO SCALE
- O.R.B. - OFFICIAL RECORD BOOK
- P.B.C.U.E. - PALM BEACH COUNTY UTILITY EASEMENT
- P.B. - PLAT BOOK
- P.C. - POINT OF CURVATURE
- PG. - PAGE
- PGS. - PAGES
- P.O.B. - POINT OF BEGINNING
- P.O.C. - POINT OF COMMENCEMENT
- P.O.I. - POINT OF INTERSECTION
- P.R.M. - PERMANENT REFERENCE MONUMENT
- P.S.M. - PROFESSIONAL SURVEYOR AND MAPPER
- P.T. - POINT OF TANGENCY
- FUD - PLANNED UNIT DEVELOPMENT
- R - RADIUS
- RAD - RADIAL
- R/W - RIGHT-OF-WAY
- S.T. - SURVEY TIE
- U.E. - UTILITY EASEMENT
- ① - PRM DESIGNATION NUMBER
- N 980.000 - STATE PLANE COORDINATE
- E 750.000

PRM CHART

PRM #	STATE PLANE COORDINATES
(1)	N 772170.048 E 919417.204
(2)	N 772148.145 E 919417.455
(3)	N 772047.773 E 919417.552
(4)	N 771947.172 E 919418.114
(5)	N 771846.027 E 919420.858
(6)	N 771747.639 E 919421.702
(7)	N 771648.747 E 919421.502
(8)	N 771549.838 E 919420.725
(9)	N 771495.720 E 919421.291
(10)	N 771482.237 E 919422.763
(11)	N 771455.337 E 919450.419
(12)	N 771459.481 E 919449.823
(13)	N 771460.022 E 920069.95C
(14)	N 772179.556 E 920055.931



NOTES:
 COORDINATES SHOWN ARE GRID COORDINATES DATUM = NAD 83 (1990 ADJUSTMENT)
 ZONE = FLORIDA EAST ZONE
 LINEAR UNIT = U.S. SURVEY FEET
 COORDINATE SYSTEM = 1983 STATE PLANE TRANSVERSE MERCATOR PROJECTION
 ALL DISTANCES ARE GROUND (UNLESS OTHERWISE NOTED)
 SCALE FACTOR = 1.00002053
 PLAT BEARING = GRID BEARING
 GROUND DISTANCE X SCALE FACTOR = GRID DISTANCE